



# Wärtsilä Lyngsø Marine

## Wärtsilä Nacos Platinum

Wärtsilä Lyngsø Marine

Lyngsø Allé 2

DK-2970 Hørsholm

Denmark

Tel. +45 4516 6200

[sales.lyngsøe.dk@wartsila.com](mailto:sales.lyngsøe.dk@wartsila.com)

[www.wartsila.com/marine/voyage](http://www.wartsila.com/marine/voyage)

### Integrated Platform

#### Management System (IPMS)

Offers a high level of integration between the ship's main control and monitoring systems, such as machinery automation, HVAC automation, emergency shut-down and integrated bridge systems.

Redundant fiberoptic networks provide fast communication throughout the system while redundant I/O field buses with electrically isolated branches ensure consistent and sturdy operations structure.

All workstations have multi-functional capability being able to solve any task.

The system integrates control and monitoring of all the basic machinery systems such as:

- Propulsion plant
- Power plant
- Auxiliary machinery
- Fuel plant/bunker system
- Bilge system & Ballast
- Power management
- Ventilation system.

### Battle damage control

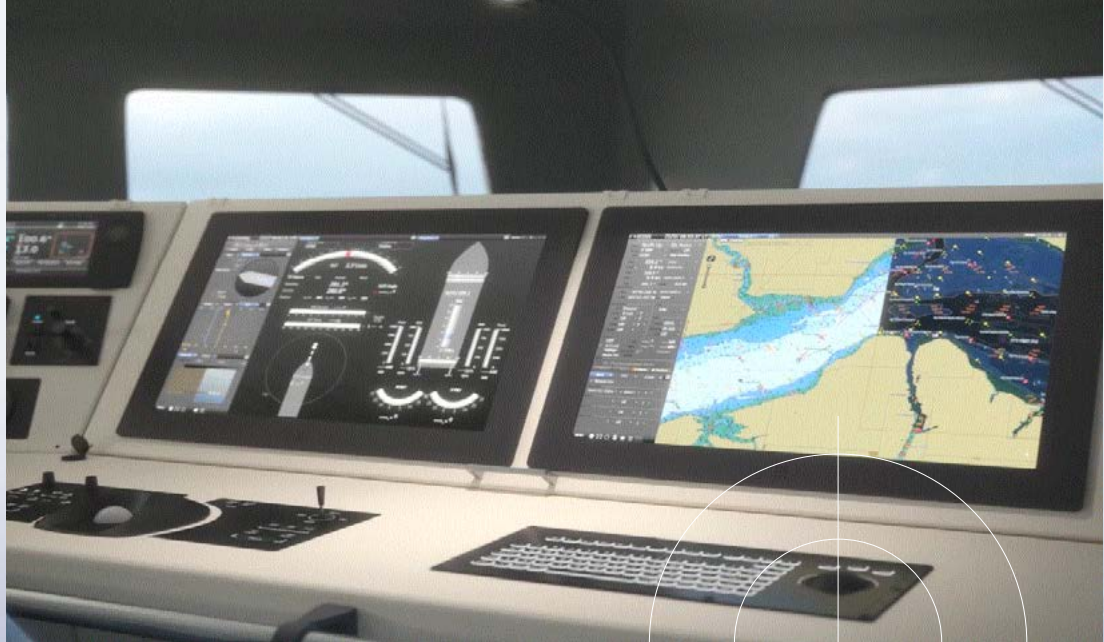
is a central part of the Platform Management System for all activities concerning safety.

The Battle damage control provides access to all information and procedures related to the handling of incidents and emergencies.

Layer-based graphics give the user the possibility to filter away information irrelevant to the actual incident or emergency. The system can include control functions related to the interfaced safety systems. Efficient training of users and crew is supported by a simulation mode.

Including features such as:

- Kill Cards
- Incident Log
- GA overview of incident area
- CCTV Integration
- Fire system monitoring



# Integrated Bridge systems for Naval Ships

Complete range of multi-functional workstations

Wärtsilä Lyngsø Marine

Lyngsø Allé 2

DK-2970 Hørsholm

Denmark

Tel. +45 4516 6200

[sales.lyngsøe.dk@wartsila.com](mailto:sales.lyngsøe.dk@wartsila.com)

[www.wartsila.com/marine/voyage](http://www.wartsila.com/marine/voyage)

**Wärtsilä Integrated Bridge System (IBS)** includes a complete range of multi-functional workstations forming a versatile and fully redundant system.

System supports full range of functions such as navigation radar, W-ECDIS, conning and sonar displays as well as the possibility for integration of many other systems.

Each workstation is a master containing software for all applications, rendering the system autonomous through various clients or server-based systems.

The system is scalable from stand-alone installations to fully

integrated bridge systems allowing all functions to be fully accessible from any multifunctional workstation onboard.

User oriented design:

- Provides full awareness with feedback, states & trends.
- Featuring a clear and intuitive and user interface.
- Using familiar paradigms, e.g. Explorer.

Software with full Naval Functions package; including:

- Tactical symbols (STAN-AG4420) for ARPA, AIS and synthetic targets
- User defined blanking or transmission sectors
- Sector stations for naval formations and station control

- Weapon danger areas for gunnery exercises & Torpedo Zones
- Target intercept calculations (own ship to target, target to target)
- Helicopter landing path
- Relative maps
- HSC for fast target tracking (speedboat, helicopter, etc.)
- Picture merging of up to four-radar antennas to an IMO approved ARPA radar
- Type approved WECDIS with the surface ship requirements of STAN AGs 4564 and 7170
- Additional military layers AML v1.0, v2.1 and v3.0





## Dynamic Positioning System

The latest generation ship control system

Wärtsilä Lyngsø Marine  
Lyngsø Allé 2  
DK-2970 Hørsholm  
Denmark  
Tel. +45 4516 6200  
sales.lyngsøe.dk@wartsila.com  
www.wartsila.com/marine/voyage

### Dynamic Positioning System

Wärtsilä DP (Dynamic Positioning) offers the latest generation ship control system.

With more than 50 years of experience supplying DP-systems, Wärtsilä combines industry-leading software with commercially available hardware components for an easy-to-operate, innovative and reliable system.

Wärtsilä DP system satisfies the most demanding requirements of the community.

Completely redesigned with the help of ergonomics professionals, DP captains and ship controls experts, the Wärtsilä DP

user interface represents a leap forward in intuitive ship control. Offering full touch operation to engage the user for safer and more efficient operation, we lead the way in connecting the operator with the control system.

The buttons are sized and located for actual touch operation similar to the familiar electronics in most households.

The user oriented design offers easy learning for both experienced operators and those new to ship controls.

Only necessary and required information is presented, preventing confusion during

critical operations. Simple page tabs allow access to more detailed parameters when desired.