



# Copenhagen Sensor Technology A/S

Electro-Optical Cameras for Naval and Maritime Applications.

Copenhagen Sensor  
Technology A/S  
Symfonivej 15  
DK-2730 Herlev  
Denmark  
Tel. +45 4492 1855  
info@copst.com  
www.copst.com

CST - Copenhagen Sensor Technology A/S is a privately held Danish company specializing in the design and manufacture of high-performance electro-optical solutions for demanding battlefield and surveillance applications.

Founded in 2001, CST has rapidly grown to a mature organization, capable of serving a global customer base. In modern facilities on the outskirts of Copenhagen, Denmark, CST houses R&D, production, QA and Sales and Marketing functions.

With a collective experience in camera, optics, electronics and software development, the highly skilled staff at CST is committed

to creating rugged, durable and innovative electro-optical solutions.

#### Customized Solutions

CST has a long tradition of working with customers, identifying unmet needs and developing solutions with sustainable value for the customer.

With a strong R&D base CST is able to provide mechanical, optical, software and hardware customizations while meeting the toughest requirements for military, homeland security, naval and high-end surveillance applications.

Whether the need calls for a ruggedized high-precision camera system, or a complete solution, comprising camera system,

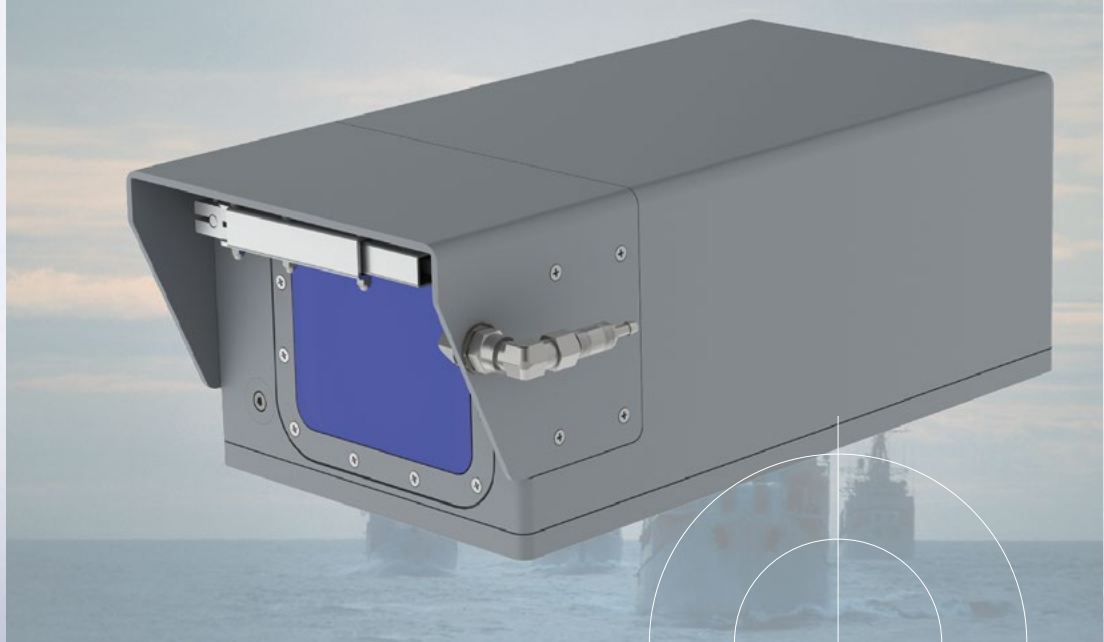
pan/tilt unit, cabling and interface adjustments for specific applications.

CST can offer a fast-track design Process.

Ruggedized Camera Solutions for:

- Coastal Surveillance
- Border Protection
- Naval Surveillance
- Perimeter Protection
- Critical Infra structure Protection
- Smuggling Surveillance
- Harbor Protection
- Sighting systems
- Incoming verification
- Barrel sight





## Ruggedized Electro-Optical Cameras for Naval and Maritime Applications

Copenhagen Sensor  
Technology A/S  
Symfonivej 15  
DK-2730 Herlev  
Denmark  
Tel. +45 4492 1855  
info@copst.com  
www.copst.com

CST cameras can recognize a human up to a distance of 8 km, making it ideal for naval and harbour protection applications and put the operator in a position to act before a potential threat or incident occurs. For harbour perimeter protection, coastal surveillance and border protection CST offers an the engine room are applications where ruggedized cameras are needed.

CST has local situational awareness cameras to endure extreme temperatures ranging from -40°C to +70°C, high vibration levels and is hermetically sealed to prevent damage from salt water and humidity.

### Local situational observation

Local situational observation on deck, along the ship's hull or inside the engine room are applications where ruggedized cameras are needed. CST has local situational awareness cameras to endure extreme temperatures ranging high vibration levels and is hermetically sealed to prevent damage from salt water and humidity.

### Naval surveillance

Naval surveillance to prevent unlawful activities such as piracy, human trafficking and smuggling is a rising challenge for many nations. The surveillance systems used at sea and along coastlines demand highly ruggedized equipment to withstand

the harsh maritime environment. CST electro-optical cameras are ruggedized and hermetically sealed to be operational under high humidity and for tough maritime missions performed by naval or patrol vessels.

### Naval remote weapon

The CST integrated zoom cameras for naval remote weapon stations are the perfect choice for customers demanding the highest performing electro-optic weapon targeting and guidance sub-system, capable of operating under extreme conditions of temperature, shock and vibration. The camera systems are bore-sighted to achieve a high precision to ensure you stay on target when zooming in or out.

